

# SALE PHOTOGRAPHIC SOCIETY COMPETITION RULES

## January 2010 to December 2010

All Club Competitions are comprised of the following **categories**:-

Colour Slides                  Colour Prints                  Monochrome Prints                  Projected Digital Images (PDI)

Dependent on the type of competition, each **category** will comprise of **up to four** of the following **sections**:

*Natural History                  Record                  Portrait                  Open                  Set Subject*

Note – A completed Entry Form **MUST** be provided by all members who enter any level of competition.

**N.B. Any image, either Print, Slide or Digital Image (or one that is fundamentally similar), may be entered on only four (4) occasions in total in the “Merits and Quarterly Competitions”, and may be entered only once in an “Annual Competition”. The image may be entered in any of the 4 formats (colour print, mono print, slide or PDI), when entered these 5 times. After these five (5) entries, the image may only be used in “External Competitions”.**

**Only Members who are not in arrears with their subscriptions are eligible to enter Competitions.**

However, as with voting rights, an existing Member who was fully paid up for the immediately previous financial year is not considered to be in arrears until the deadline date of 31<sup>st</sup> December for subscriptions to be paid has passed, provided they are re-joining in the new financial year. New Members (to whom the deadline does not apply) would have to pay the appropriate subscription rate before being able to enter any competitions

### Statutory Rules for All Competitions

#### **Print Entries:**

1. The print must be MOUNTED, TITLED and show in which SECTION it has been entered.
2. The print must be backed with a backing board which should be of a similar size to the front mount to prevent damage to other prints. The backing must have no exposed tape and the mount thickness must not exceed 4mm.
3. The Print and Mount must not exceed 50cm x 40cm overall.
4. The author's name must not appear on the mount or print.
5. Prints entered in the Monochrome Section must be Monochromatic images (which may be singly toned in a single tone colour). Monochrome prints which have one or more added colours/dyes can only be entered in the Colour Print section

#### **Slide Entries:**

1. The slides may be mounted in any type of mount except cardboard.
2. The mount must be SPOTTED in the bottom left corner when viewed the correct way up.
3. The title and section must be shown on the mount.
4. The author's name must not appear on the mount.

#### **Projected Digital Image Entries (PDI's):**

1. The images must be submitted at a resolution of 1024x768 PPI and also 1400x1050 in sRGB/jpg format.
2. A black background must be used as a frame for each image.
3. The title, section and Author must be shown in the files / folder used to submit the images (see picture)
4. The author's name must not appear in the image.
5. The images must be submitted on a USB Flash Drive.

**Throughout the year there are three separate competitions, as follows :-**

## **1. MERITS COMPETITION**

The Merits have only two sections, 'Open Section' and 'Set Subject Section' and are judged by a Member of the Society.

Each competition has 4 categories (Slides, Colour Prints, Mono Prints and PDI).

All 4 categories are held on a single evening.

Entries must be submitted **two** weeks before the competition, together with a completed Entry Form.

### **1.1 Eligibility**

Only entries that have not gained an award in any previous MERITS Competition at Sale Photographic Society may be entered any future MERITS competition.

### **1.2 Number of Entries Allowed**

A total of ten (10) images may be entered per author per competition. That is 10 in total across all categories (Slides, Colour Prints, Monochrome Prints and PDI's).

A maximum of three (3) images may be entered in any one section

In **Merits Competitions**, points are awarded **out of 20** at the Judge's discretion for the First, Second and Third placed images for both the "**Set Subject Sections**" and "**Open Sections**". The judge may also score all other images in the competition out of 20 at his discretion. The points for these sections will be totalled for the year in **Monochrome Prints, Colour Prints, Slides and PDI's** and trophies awarded for each at the Annual Exhibition

## **2. QUARTERLY COMPETITION.**

There are three Quarterly Competitions during the year, each held over two evenings, one evening for the 'Colour Print' & 'Slide' categories and one for the 'Mono Prints' & 'Projected Digital Images' category.

Each of these categories comprises **OPEN, RECORD, PORTRAIT and NATURAL HISTORY Sections.**

**Quarterlies are Judged by outside Judges.**

In **Quarterly Competitions**, points are awarded out of 20 for all images, but only the top 3 in each section (Slides, Colour Prints, Mono Prints, and PDI), will be registered as awards.

Points will be totalled for the year for each section, and trophies awarded for each category at the Annual Exhibition.

Entries must be submitted **two** weeks before the competition, together with a completed Entry Form.

### **2.1 Eligibility**

Only entries that have not gained an award in any previous QUARTERLY Competition at Sale Photographic Society may be entered in any future QUARTERLY or MERITS competition.

### **2.2 Number of Entries Allowed**

Up to six (6) colour prints can be entered with a limit of three (3) in any one section

Up to six (6) monochrome prints can be entered with a limit of three (3) in any one section

Up to sixteen (16) slides can be entered with a limit of four (4) in any one section

Up to six (6) Projected Digital Images slides can be entered with a limit of three (3) in any one section

### **2.3 Natural History Section**

Any manipulation of the image is limited to minor re-touching of blemishes, exposure, sharpening etc and most not alter the content of the original image.

### **3. ANNUAL COMPETITION**

This competition is held over four evenings, one for each category, 'Colour Prints', 'Mono Prints', 'Slides' and 'Projected Digital Images'. Each category is judged by an external judge :- i.e. someone who is NOT a Member of Sale Photographic Society.

Each competition comprises all **four sections**. (Open, Portrait, Natural History and Record)

In addition, there is also an additional section for 'Beginners'. Anyone who has **never** won an award in any previous **Annual Competition** at this **or any other Photographic Society** is eligible to enter as a **Beginner** in the **Open sections** of the Slide, Monochrome Print, Colour Print Competitions, and PDI.

"Beginner" entries must be indicated as such on the entry. E.g. written on the print mount.

Entries must be handed in **THREE WEEKS** before the competition, together with a completed Entry Form.

**Four outside Judges will each judge one of the categories, Slides, Colour Prints, Mono Prints and PDI's.**

The Judge will award a Trophy and Certificate for the best slide, print, or PDI in each section/category.

In addition the Judges can award up to SIX Certificates of Merit in each Category i.e. Slides, Colour Prints, Mono Prints, and PDI's.

The judge may also award any number of Certificates for Commended, Highly Commended, and Very Highly Commended, at their discretion.

Trophies and Certificates will be awarded at the Annual Exhibition for each Winning Author.

#### **3.1 Eligibility**

Only entries that have not previously been entered in an Annual Competition may be entered.

#### **3.2 Number of Entries Allowed**

Up to twelve (12) colour prints can be entered in each category with a limit of five (5) in any one section

Up to twelve (12) monochrome prints can be entered in each category with a limit of five (5) in any one section

Up to twenty (20) slides can be entered in each category with a limit of five (5) in any one section

Up to twelve (12) Projected Digital Images slides can be entered in each category with a limit of five (5) in any one section

#### **3.3 Natural History Section**

Any manipulation of the image is limited to minor re-touching of blemishes, exposure, sharpening etc and must not alter the content of the original image.

*All prints entered in the Annual Competition will be eligible for entry into the L&CPU Annual Print Competition. It is strongly recommended that they should all be backed with a suitable backing board, but leaving the total thickness 4mm or less, this being the maximum thickness stipulated in the L&CPU Rules.*

*If you do not wish your entry to be selected for the L&CPU Competition, please inform the Competition Secretary in advance.*

## COMPETITION CATEGORIES

### Open

This is a 'Catch-All' section for images that do not fit into any of the other categories, including landscape, illustrative, pictorial, or of an avant-garde or experimental nature.

### Record

Means an image of an object taken solely to show the best possible way to record it to the best advantage. It should be by way of explaining the object and preserving it for all time so that an observer looking at it in perhaps one hundred years time will be able to see exactly what it is. It should be sharp all over, interesting and self-explanatory. It need not necessarily be pictorially pleasing, but it is a bonus if it is. It must also be accurately titled.

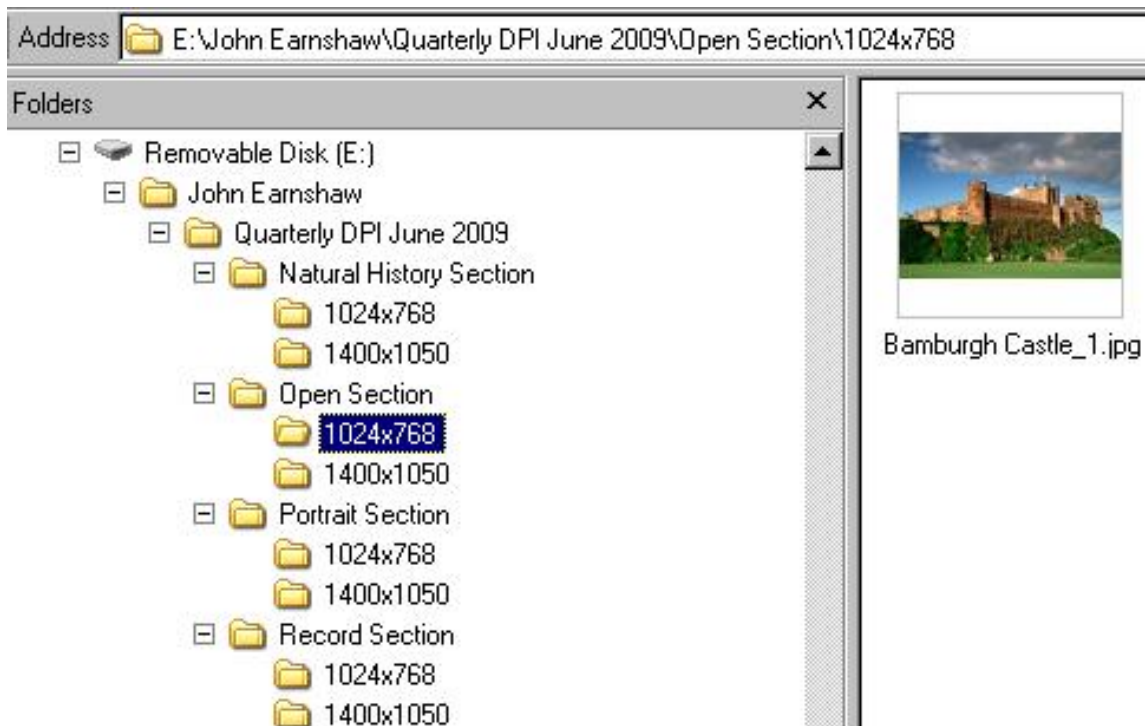
### Portrait

Means an image or representation of a person or a facial picture of a person or persons. They may be formal (in a studio setting), or informal (such as showing a persons work, hobby etc). The best portraits tell us more about the person than just a straightforward snap shot.

### Natural History

Means wild living creatures or plants, NOT including domesticated animals or cultivated garden plants and vegetables. Images will be acceptable if "The Hand of Man" cannot be seen in the image. Geological features, palaeontology, and meteorology are acceptable. All require accurate names, (Latin if applicable), and definitely not 'cute' titles.

### View of Directory Structure on USB Flash Drive for PDI Competition Entries



# Sale P.S. Competition Rules From Jan 1 2010 (Shortform)

## ELIGIBILITY OF ENTRIES:-

- 1) No entry that gains an award in any MERITS competition may be entered in any future MERITS.
- 2) No entry that gains an award in any QUARTERLY competition may be entered in any future QUARTERLY or MERITS
- 3) No entry that gains an award of any description in the ANNUAL competition may be entered in any other club competition.
- 4) All entries in all classes of competition must be accompanied by a completed Entry Form

N.B. Any image, either Print, Slide, or PDI (or one that is fundamentally similar), may be entered on only four (4) occasions in total in the "Merits and Quarterly Competitions", and may be entered only once in an "Annual Competition". After these five (5) entries, the image may only be used in "External Competitions".

## MERITS:- Consisting of an OPEN Section and a SET SUBJECT in all four categories: (Slides, Colour Prints, Monochrome Prints & PDI's).

**A total of ten images may be entered per author per competition. That is 10 in total across all categories (Slides, Colour Prints, Monochrome Prints & PDI's).**

**A maximum of three (3) images may be entered in any one section (Set Subject or Open). E.g. 3 in the Open PDI and 3 in the Set Subject Colour Print, with a total of 10 across all categories.**

### 1) Colour and Monochrome Prints

- a. The Print and Mount must not exceed **50cm x 40cm** overall. The mount must be backed with a suitable flush mounted backing board with no exposed tape.
- b. The print **must be** MOUNTED, TITLED and show in which SECTION it has been entered.
- c. The author's name **must not** appear on the mount or print.

### 2) Colour Slides

- a. The slides may be mounted in any type of mount except cardboard.
- b. The mount **must be** SPOTTED in the bottom left corner when viewed the correct way up.
- c. The title and section **must be** shown on the mount.
- d. The author's name **must not** appear on the mount.

### 3) Projected Digital Images

- a. The images must be submitted at a resolution of 1024x768 PPI and also 1400x1050 in sRGB/jpg format
- b. The images must be submitted on a USB Flash Drive
- c. A black background must be used as a frame for each image
- d. The title, section and Author **must be** shown in the files / folder used to submit the images.

## QUARTERLY COMPETITIONS:- Consisting of OPEN, RECORD, PORTRAIT and NATURAL HISTORY

### 1) Colour and Monochrome Prints

- a. A maximum of **6 prints** may be entered in any Quarterly Competition in the Colour Print category or the Mono Print category, which are held on different nights.
- b. The Print and Mount must not exceed **50cm x 40cm** overall. The mount must be backed with a suitable flush mounted backing board with no exposed tape.
- c. All other rules as for the Merits competitions.

### 2) Colour Slides

- a. Up to **Four slides** per section may be submitted in each section.
- b. Slides may be in **plastic mounts** or **glass**. All other rules as for Merits competitions.

### 3) Projected Digital Images

- a. A maximum of **six Projected Digital Images** may be entered in total
- b. Up to **three PDI's** may be entered in each section.
- c. All other rules as for the Merits competitions.

**Note that in the Natural History Sections, no digitally manipulated/enhanced images may be entered**

**THE ANNUAL COMPETITION:- Sections as for Quarterly:** N.B. Entry into the Annual Competition is on the understanding that all entered images will be available for selection for the Society's Entry in the Lancashire & Cheshire Photographic Union Competition. If you do not wish your entry to be selected from, please inform the Competition Secretary in advance.

### 1) Colour and Monochrome Prints

- a. Anyone who has **never** won an award in any previous **Annual Competition** at this **or any other Society** is eligible to enter as a **Beginner** in the **Open Sections** of the Slide, Monochrome Print and Colour Print Competitions.
- b. The size of the Print + Mount must not exceed **50cm x 40cm** but **the mount must be at least 37.5cm along one side.**
- c. Where applicable, **Beginner** must be written on the mount.
- d. A combined total of 12 prints may be entered in the Mono Print Competition and a combined total of 12 in the Colour Print Competition. Up to **Five Prints** may be entered in each section.
- e. The mount must be backed with a suitable flush mounted backing board, with no exposed tape.
- f. All other rules as for Quarterly Competitions

### 2) Colour Slides

- a. A maximum of **Five slides** may be entered in each section making a Maximum of 20 slides in all.
- b. Slides may be in **plastic mounts** or **glass mounts.**
- c. All other rules as for Quarterly Competitions.

### 3) Projected Digital Images (2010 onwards) (Judged Separately)

- a. A maximum of **12 Digital Projected Images** may be entered in total in the Annual Competition
- b. Up to **Five Projected Digital Images** may be entered in each section.
- c. All other rules as for Quarterly Competitions

**Note that in the Natural History Sections, no digitally manipulated/enhanced images may be entered**