

X-Rite Installation and Use Notes

John Earnshaw 27th February 2017

These notes refer to the clubs recently purchased X-Rite Profiler.

The Profiler can profile both Monitors and Projectors.

I have used the Profiler to profile my Viewsonic Monitor, and it has provided a profile which appears to be only slightly different to the one I have been using for many years created by the Spyder 2 Profiler.

I have experienced quite a few problems getting the Profiler to produce a profile.

If you experience problems, follow these guidelines which may help you.

If these do not work, abandon this piece of crap and use the Spyder instead.

Possible issues:-

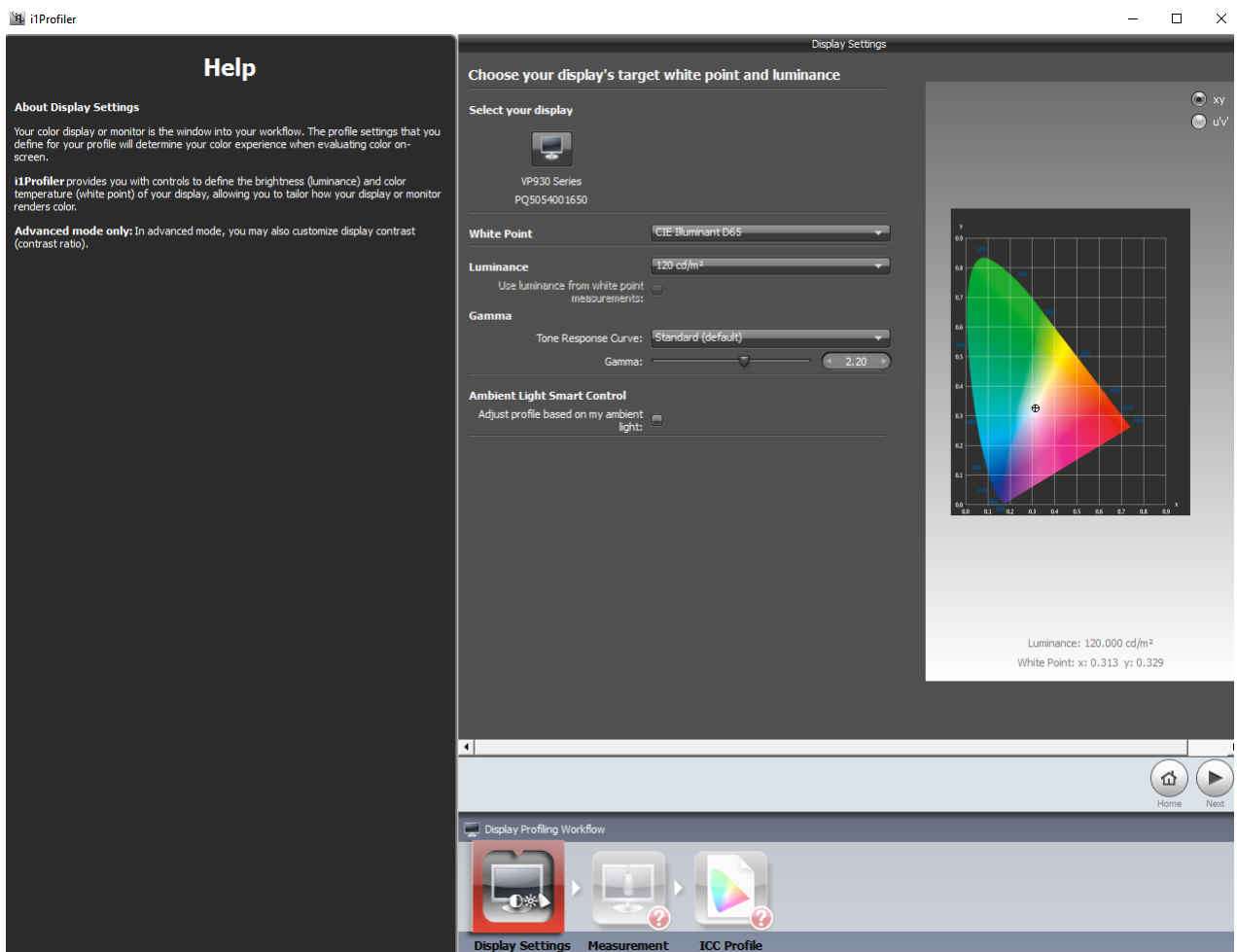
1. When the X-Rite software is loading it will also load software from Pantone. I have no idea what this is used for - whether it is used by the X-Rite software in the calibration procedure or not. However, to be on the safe side I let my computer load it.
2. After installation, it is best to update the X-Rite software, as the version on the CD is 2014, prior to the introduction of Windows 10 (Shit !!). If you have Windows 7 you should be ok.
The current (Feb 2017), software is version is v6.1.7.

A dialog box should open asking you if you want to update the software, and you can say yes, regardless of what version of Windows or Mac you are using. The computer will then update to the latest version.

With reference to the screen grab on the next page, it's probably best to leave the "Check for Update" dialog set to On, which is the default.

3. I left the calibration in Basic Mode when I calibrated my monitor.
4. Next, plug in the Calibrator Head into a USB port and hang the head over your monitor screen.

5. Click on the "Display Profiling" Icon which will take you to the Display Settings screen as shown below.



6. I left things as they are on the "Display Settings" screen. Note that the X-Rite software should detect your monitor and display it at the top of this screen. In my case it was a VP930 Series. Then click on the Next button.

7. This will take you to the "Measure colour patches" screen as shown below. The Measurement Instrument should show as the i1DISPLAY.

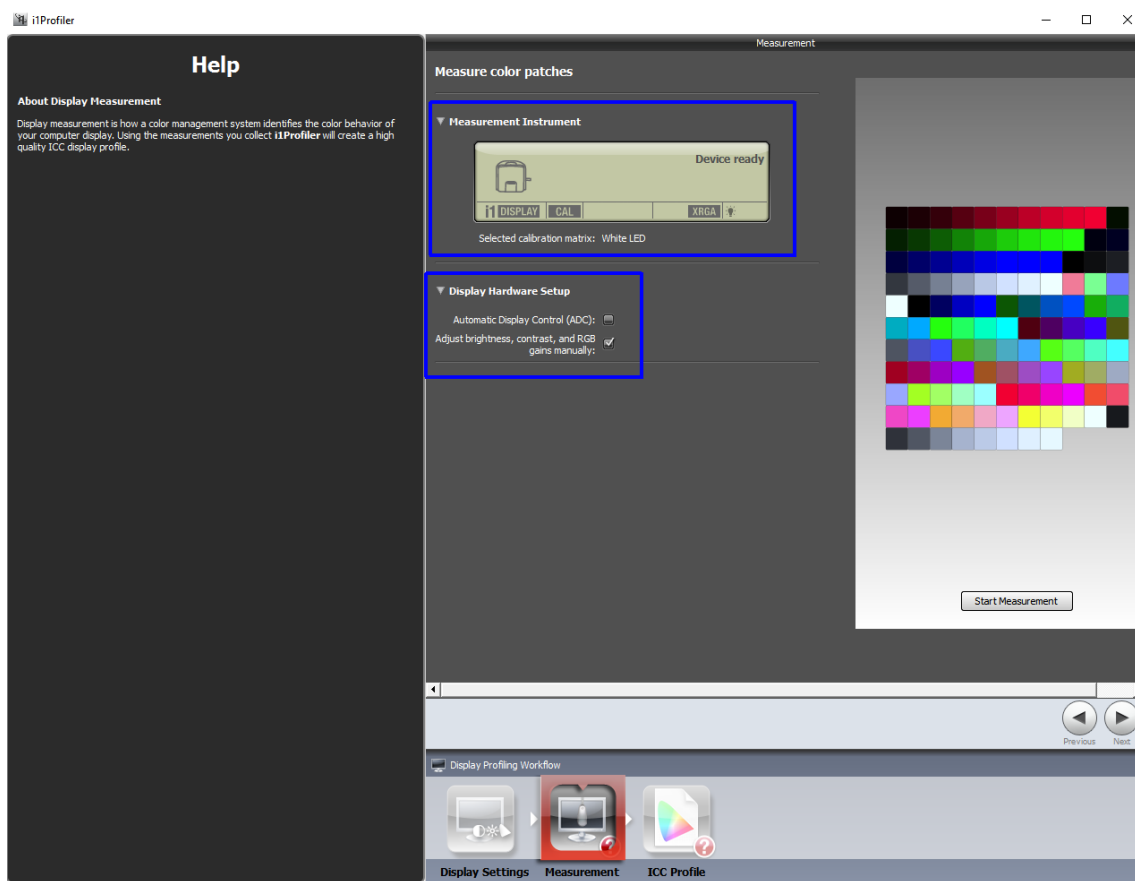
I used the manual option to adjust my brightness and contrast and RGB gains, but you can also use the Automatic option if your monitor does not have sufficient controls.

*Note :- If the i1Display does not show up in that dialog box, and you get the "i1DISPLAY NOT FOUND", try unplugging the display USB lead from your computer and try another USB socket. If that does not work, **JUST GIVE UP and use the Spyder instead !!***

8. Assuming the i1DISPLAY is there, click on the start measurement button and the device will start the profile creation.

Just follow the on-screen instructions. It will take about 2 mins to do the profiling with lots of coloured screens appearing.

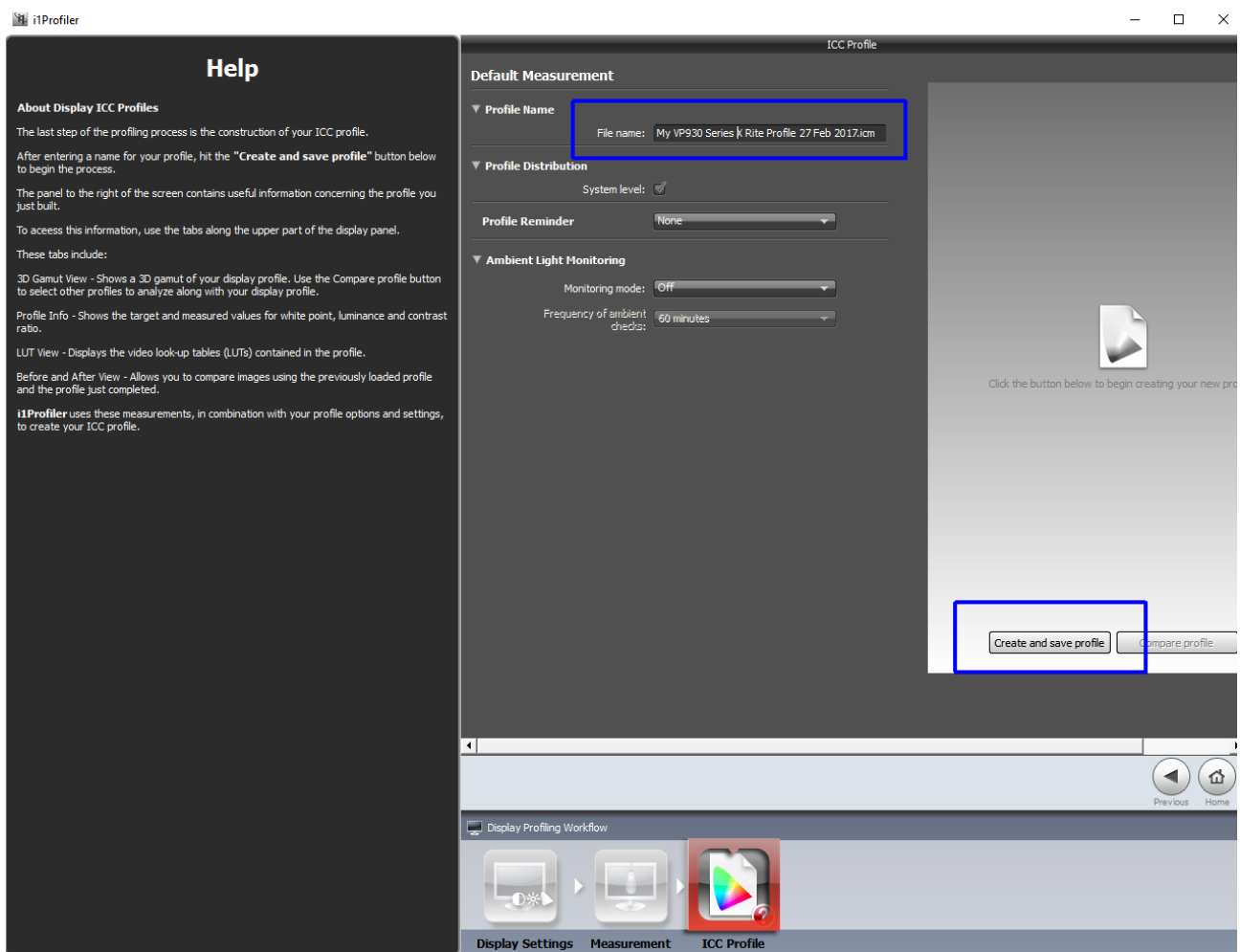
I did not do a factory reset on my monitor as I did not know how to do that. I just used my existing profile settings that were already in use.



9. When the profiling is complete, click on the "Next" button which will take you to the "Icc Profile" screen. In the "Profile Name" box, type the name you want the profile to be called. I called mine :-
"My VP930 Series X Rite Profile 27 Feb 2017.icm"

Towards the bottom of the screen are 2 other buttons. One is the "Create and save profile" button and the other is the "Compare profile" button which is greyed out, as you have not yet created the profile..

So click on "Create and save profile"

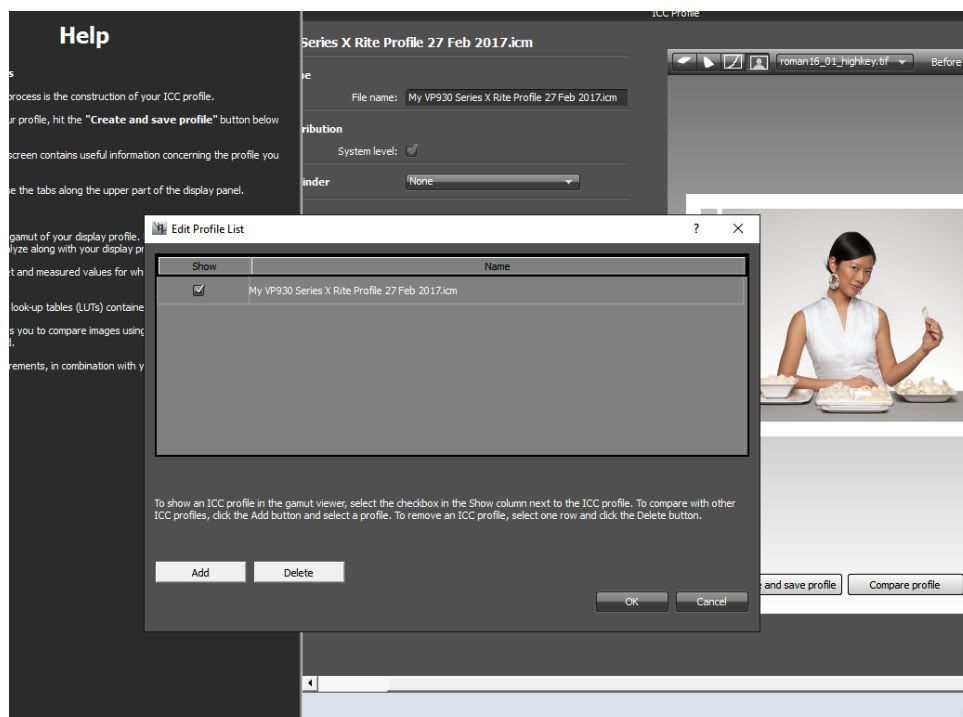


When you click the "Create and save" button, a new screen will appear and the "Compare profile button will no longer be greyed out, as shown in the next image.

10. Now you definitely want to compare the colours etc of the profile you have just created with the one that you already have, and the most obvious way of checking this is to click on the "Compare profile" button.



However, if you do this, the software will ask you to load another Icc profile to compare the new profile with, as shown below. And this is where a number of people who have used the profiler come unstuck.



What the system is asking you to do, is load another profile (presumably the one you are currently using, maybe from the Spyder), to compare the new profile with - BUT with the X-Rite, this new profile **MUST** be a profile created by the X-Rite profiler. If you try and load any other type of profile such as from the Spyder, it will say it cannot load the profile, and therefore you cannot check the before and after appearance.

(see notes on how to select different profiles later on)

This has caused problems with users in the past, as without being able to compare the profile with that which you already use, it leaves the user wondering if the new profile is correct.

11. The correct way to compare the new profile with the existing profile is as follows.

Notice on the Icc profile picture, above the picture of the lady, there are 4 small icons, as shown below

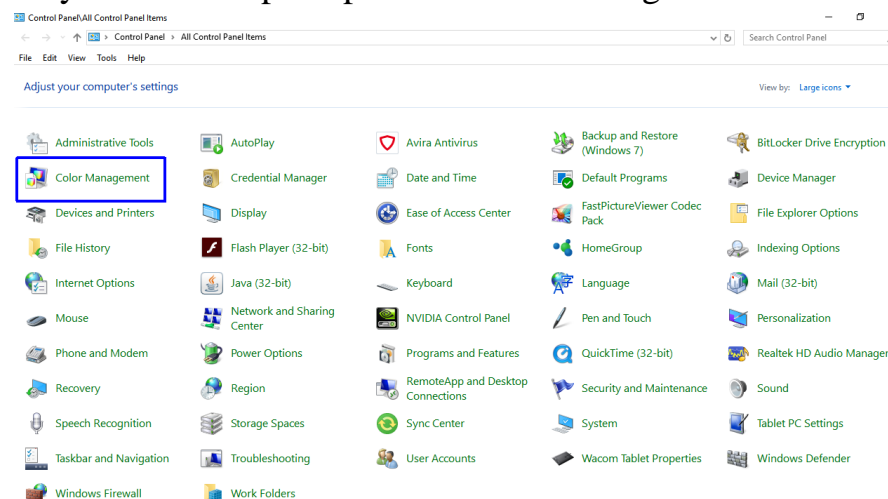


If you click on the one with a portrait on it, it brings up two "Before and After" buttons. Now if you click on these buttons, it will change your screen profile to either the new X-Rite profile you have just created, or the existing profile that was already in use. So that you can now check how they compare.

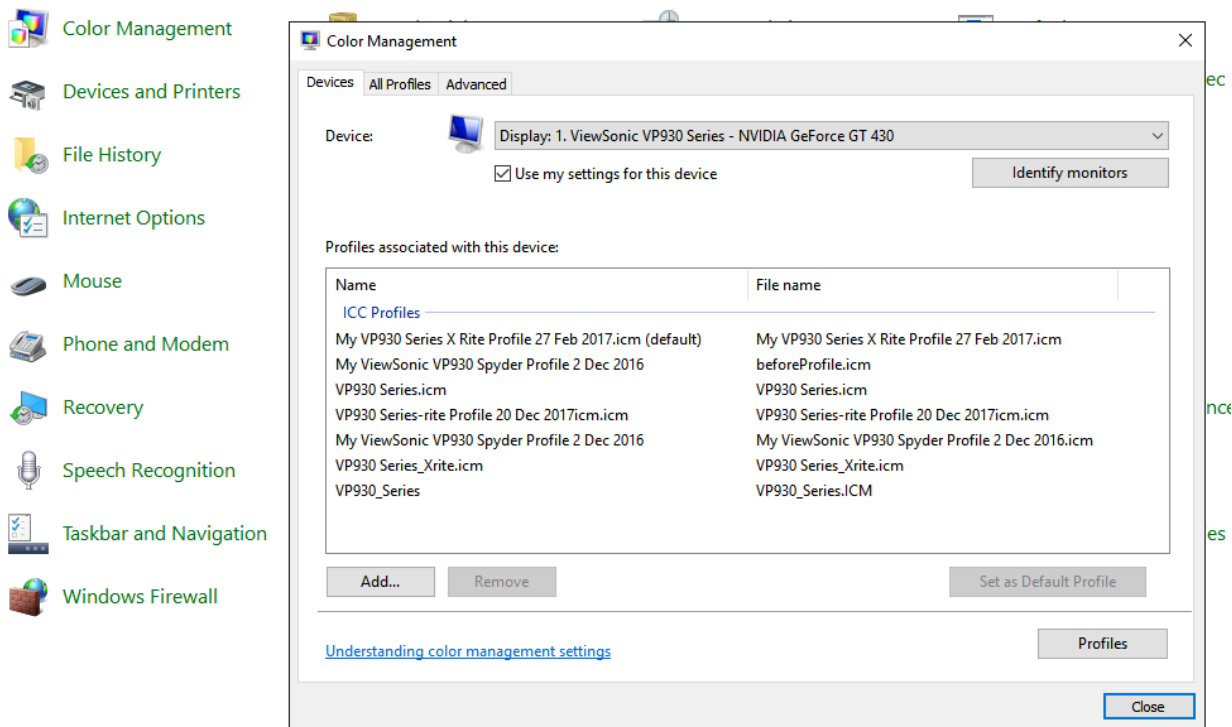
In my case, there appeared to be a small difference in colours, but not too significant.

12. At this point you need to decide which profile you will stick with.

So you need to open up the Control Panel go to the "Colour Management"

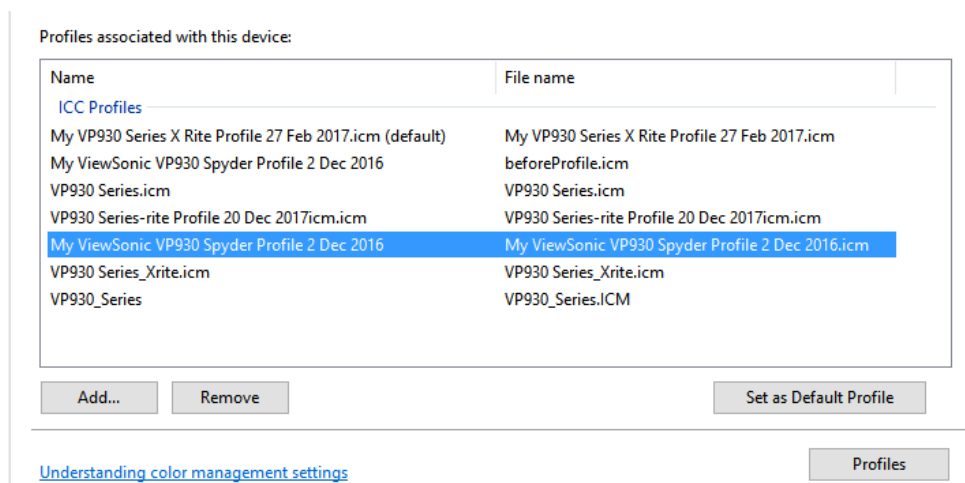


13. A new dialog box opens, showing all the colour profiles that can be used with your monitor, as shown below.



What you will notice is that the X-Rite software will have set the new profile it has created as the new "default" profile.

This is fine if you are happy with the profile. However, if you are not happy, and want to revert to your previous profile, just click on the profile you want to use as the default, then click "Set as Default Profile", and that will be applied. For example, on my system if I wanted to revert to the Spyder profile I had been using before I used the X-Rite, I can click on that profile and set it as default.



I hope this guide has proved useful. Any questions, give me a call or email me.

John Earnshaw 27 February 2017